

SPECIFICATIONS

Robot

ARCMAN™ A60



Welding Power Source

SENSARC™ RA500



Positioner

Load Capacity : 33,000lb

Slider

Linear Stroke

>Left-Right : 59.06ft

>Back-Forth : 78.74in

Welding Wire

FAMILIARC™ MX-50R



Code : AWS A5.20 E70T-1C

Diameters : 0.052"

Shielding Gas : 100% CO2

Beam Size

Length : 59.06ft(Max) 13.12ft(Min)

Height : 32.75in(Max) 13.78in(Min)

Shape : W30×357(Max) W14×61(Min)

Welding Joints

Horizontal, Fillet(Leg length) : 0.20 - 0.63in

Flat, Single Bevel Groove : 0.66 - 2.30in

Horizontal, Single Bevel Groove : 0.66 - 1.28in

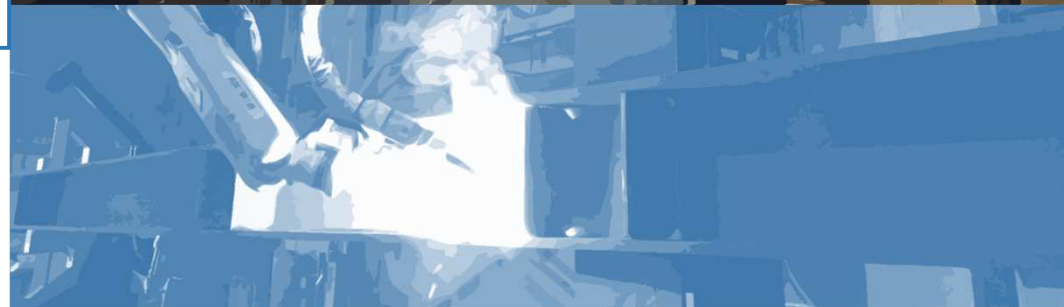
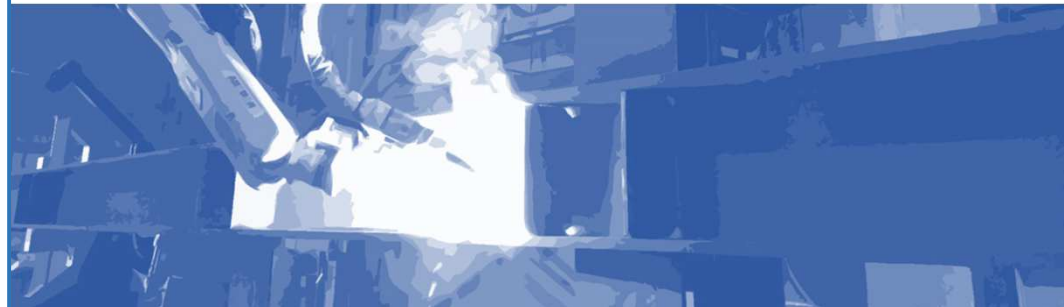


KOBELCO

WELDING ROBOT

ARCMAN™

STRUCTURAL STEEL WELDING ROBOT SYSTEM



The information contained within this catalog such as but not limited to functions, features, dimensions, numerical values, photographs, graphs, evaluations, results and/or specifications offered are intended and listed solely for the purpose of explaining the general features and performances of our products only and are not guaranteed nor guarantee anything as a result. In addition, the information contained within this catalog is subject to change at any time without notice. Kindly contact our sales offices and/or representatives nearest to your location for the latest information.

KOBELCO - Your Best Partner

<http://www.kobelco-welding.jp/>

KOBELCO WELDING OF AMERICA INC.



4755 Alpine Drive, Suite 250, Stafford, Texas 77477
TEL: 281-240-5600 FAX: 281-240-5625

www.kobelcowelding.com

Rev.2-5/31/2023

KOBELCO, the only complete welding solutions company

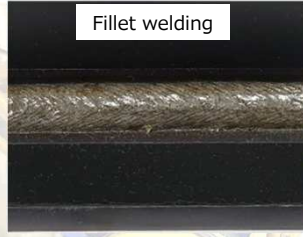
- ✓ More than 2,500 Structural Steel Robot Systems have been installed throughout the world.
- ✓ All equipment is designed and developed by **KOBELCO**

Increased productivity

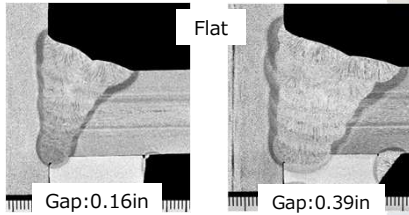
Our superior welding process increases your productivity. Applicable weld joints are not only fillet but also **CJP groove**.



CJP Groove welding

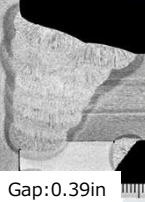


Fillet welding

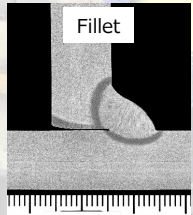


Flat

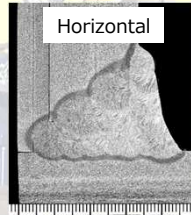
Gap:0.16in



Gap:0.39in



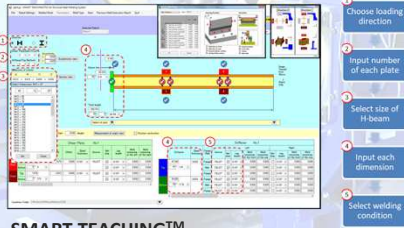
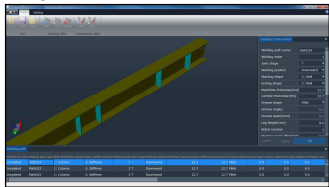
Fillet



Horizontal

Easy to use

You need no programmer and can choose the best way from the two type of software. All you need to do is to input minimal information.



SMART TEACHING™

Dimension of wide flange beam and leg length (welding condition) are all listed. Choose the type of welding joint and its size. Only minimal information input is needed, and all work data can be viewed in the input diagram. No need to make a programming data on-site. SMART TEACHING™ software generates each program and welding conditions automatically.

3D CAD-Link

Only few steps to make a welding program. Input CAD data, software automatically recognized all welding joints and size of each plate. Select the joint and software, makes collision check before generating welding program data. Welding condition or size are adjustable in the software before sending data to SMART TEACHING™. Operation is extremely easy and complex welding will be realized.

Highly automated production

You need no monitoring, as our peripheral equipment provides continuous production.



Wire cutter

Automatically cuts the welding wire to adjust stick out length for continual welding.



Nozzle auto changer

Changes welding nozzle (Short and Long) for joint adaptation.



Slag removal attachment

Automatically changes tool from welding torch to Needle gun for automatic cleaning.



Welding power source

High performance digitally controlled welding power source for robotic welding.



Welding wire

Excellent weldability and efficiency in flat and horizontal welding with ARCMAN™.



Controller and Software

Specially designed welding system controller and software for easy operation.

Provide complete welding solution

We can provide the highest quality, as we manufacture are own equipment and consumables.



ARCMAN™ A60



SENSARC™ RA500



FAMILIARC™ MX-50R