

ARCMANTM series **PORTABLE**

Features

- A fully automated portable **CJP** capable FCAW oscillator with dedicated welding power source and welding wire.
- Compact, lightweight (approx. 19lb), portable and no installation needed.
- All you have to do is two teach points and press the start button.
- Automatically detects groove type and thickness, then generates optimal welding conditions.
- It's possible for one person to operate multiple **ARCMAN**TM series PORTABLE units.
- **MX-50R** specially designed for automated applications using hybrid slag producing formula gives its excellent weldability and efficiency in flat and horizontal welding with **ARCMAN**TM series PORTABLE.



Overview



SENSARC™ AB500

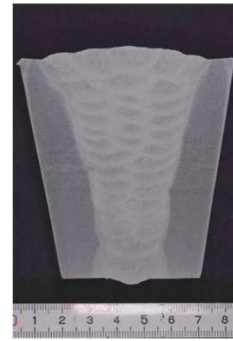
Rated input power	28KVA, 27KW
Output current, voltage	30~500A, 12~45V
Rated duty cycle	450A-100%

Applicable welding position

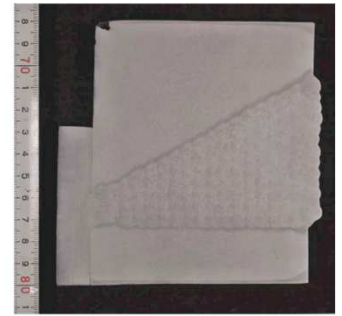
	Type of groove
Flat position	Single bevel groove T joint
	Single bevel groove butt joint
	V groove butt joint
Horizontal position	Single bevel groove T joint
	Single bevel groove butt joint

High quality welding

Flat butt weld



Horizontal butt weld



Hybrid flux cored wire for carbon steel suitable for **ARCMAN™**

FAMILIARC™ MX-50R AWS A5.20 E70T-1C

AWS D1.8
Seismic Arc



【Compared to conventional Flux Cored Wire (A5.20 E70T-1C, E71T-1C)】

- Higher deposition rate
- Less slag generation

Approvals

Available Products

AWS D1.8

Wire Dia.

0.052"

Package

33lbs spool

The information contained within this document such as but not limited to functions, features, dimensions, numerical values, photographs, graphs, evaluations, results and/or specifications offered are intended and listed solely for the purpose of explaining the general features and performances of our products only and are not guaranteed nor guarantee anything as a result.

KOBELCO - Your Best Partner

<http://www.kobelco-welding.jp/>

KOBELCO WELDING OF AMERICA INC.

4755 Alpine Drive, Suite 250, Stafford, Texas 77477

TEL: 281-240-5600 FAX: 281-240-5625

www.kobelcowelding.com