

## SPECIFICATIONS

### Robot

**ARCMAN™** A60



### Welding Power Source

**SENSARC™ RA500**



### Positioner

Load Capacity : 33,000lb

### Slider

Linear Stroke

>Left-Right : 59.06ft

>Back-Forth : 78.74in

### Sensing

Wire touch or Laser



### Welding Wire

**FAMILIARC™** MX-50R



Code : AWS A5.20 E70T-1C

Diameters : 0.052"

Shielding Gas : 100% CO2

### Beam Size

Length : 59.06ft(Max) 13.12ft(Min)

Heigh : 32.75in(Max) 13.78in(Min)

Shape : W30×357(Max) W14×61(Min)

### Welding Joints

Horizontal, Fillet(Leg length) : 0.20 - 0.63in

Flat, Single Bevel Groove : 0.66 - 2.30in

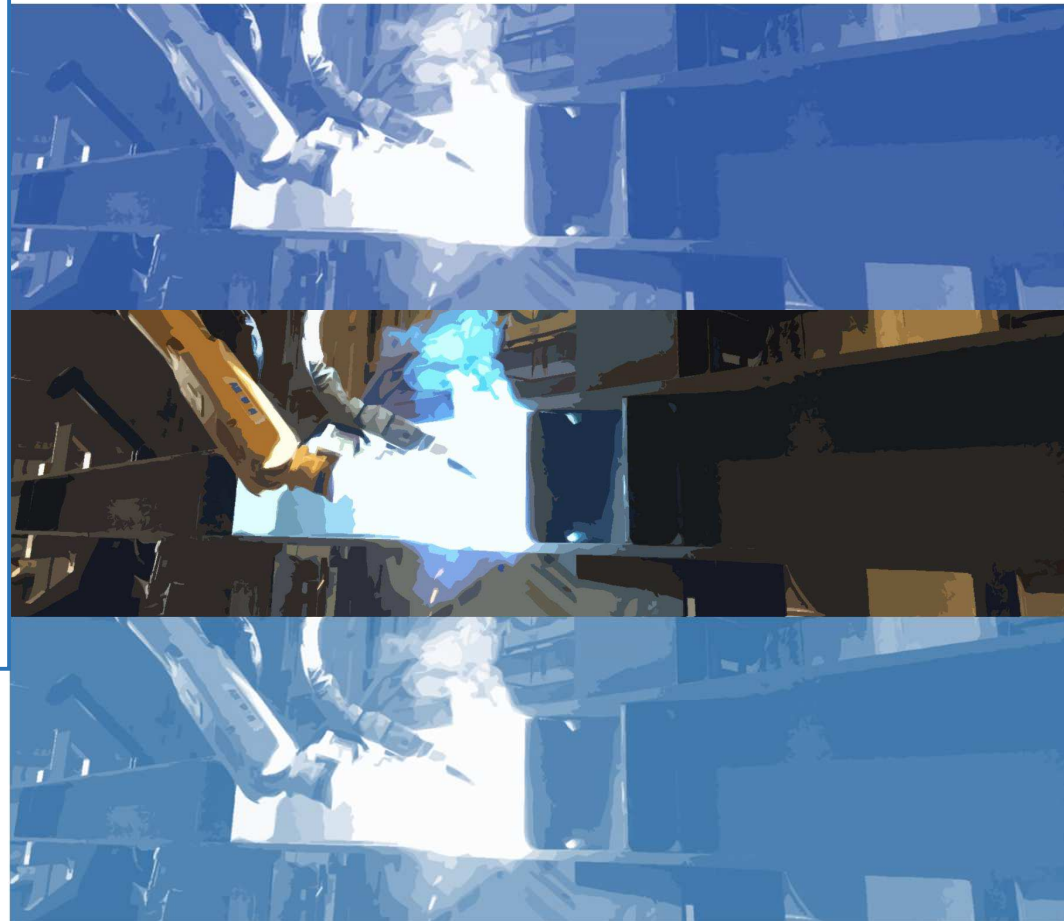
Horizontal, Single Bevel Groove : 0.66 - 1.28in



# KOBELCO

# ARCMAN™

## STRUCTURAL STEEL



The information contained within this catalog such as but not limited to functions, features, dimensions, numerical values, photographs, graphs, evaluations, results and/or specifications offered are intended and listed solely for the purpose of explaining the general features and performances of our products only and are not guaranteed nor guarantee anything as a result. In addition, the information contained within this catalog is subject to change at any time without notice. Kindly contact our sales offices and/or representatives nearest to your location for the latest information.

**KOBELCO - Your Best Partner**

<http://www.kobelco-welding.jp/>

**KOBELCO WELDING OF AMERICA INC.**

4755 Alpine Drive, Suite 250, Stafford, Texas 77477  
TEL: 281-240-5600 FAX: 281-240-5625

[www.kobelcowelding.com](http://www.kobelcowelding.com)

Rev.3-2/14/2024

# KOBELCO, the only complete welding solutions company

- ✓ More than 2,500 Structural Steel Robot Systems have been installed throughout the world.
- ✓ All equipment is designed and developed by **KOBELCO**.

## Increased productivity

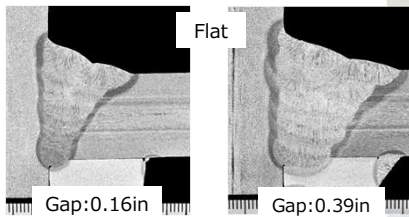
Our superior welding process increases your productivity. Applicable weld joints are not only fillet but also **CJP groove**.



CJP Groove welding

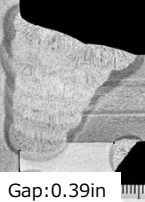


Fillet welding

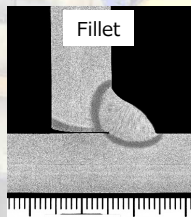


Flat

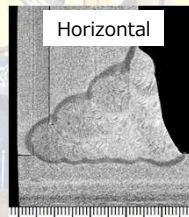
Gap:0.16in



Gap:0.39in



Fillet



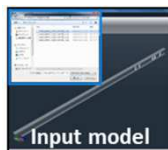
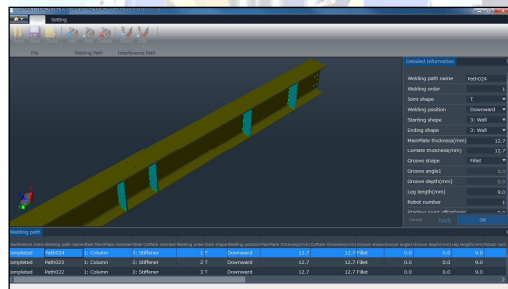
Horizontal

## Easy to use

You need no programmer! All you need to do is to input minimal information.

### 3D CAD-Link

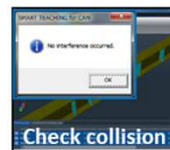
Only few steps to make a welding program. Input CAD data, software automatically recognized all welding joints and size of each plate. Select the joint and software makes collision check before generating welding program data. Welding condition or size are adjustable in the software before sending data to the robot. Operation is extremely easy and complex welding will be realized.



Input model



Choose joints



Check collision

## Highly automated production

You need no monitoring, as our peripheral equipment provides continuous production for both welding & interpass cleaning processes.



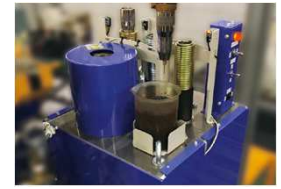
### Slag removal attachment

Automatically changes tool from welding torch to Needle gun for automatic cleaning.



### Wire cutter

Automatically cuts the welding wire to adjust stick out length for continual welding.



### Nozzle auto changer

Changes welding nozzle (Short and Long) for joint adaptation.

## Wide range of applicable welded connections

Structural steel designs are complicated, but our robot system is capable to accommodate a variety of joint details of configurations.

